

*We have one goal — improving the noise and vibration quality of our customers' products. Roush delivers innovative, effective noise and vibration control solutions. By combining advanced analysis capabilities, comprehensive engineering services, and state-of-the-art facilities, Roush has become a proven partner in identifying and resolving challenging noise and vibration issues. Backed by the diverse capabilities of the Roush family of companies, we are uniquely equipped to provide turnkey noise and vibration solutions.*

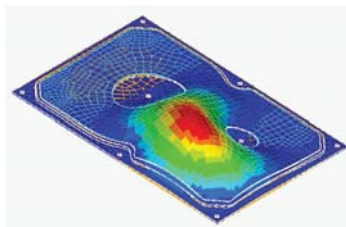
Contact us:  
 12011 Market St.  
 Livonia, MI 48150  
 Phone: 734-779-7400 or  
 800-486-3637  
 Fax: 734-779-7903  
 NVH@roushind.com  
[www.roushind.com](http://www.roushind.com)

## Modal Analysis

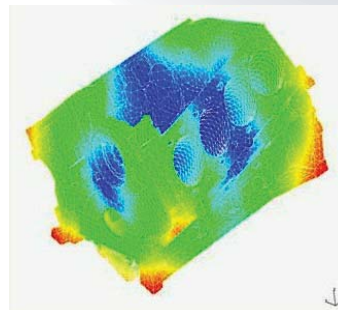
Roush provides expert modal testing. Each year Roush performs many modal tests, either stand-alone, or as part of a larger noise and vibration problem solving effort. Modal results are used to diagnose vibration problems, verify targets, validate analytical models, and design damping treatments. LMS CADA-X software is used for complex multiple-reference modals, and MEScope is used for simpler single-reference modals. We have the specialized tools for modal tests on almost any scale from printed circuit board components to full-sized Recreational Vehicles.

Roush also provides expert modal analysis using ABAQUS FEA software. One of our specialties is estimating automotive powertrain (engine and transmission combined) natural frequencies with partial FEA models (e.g. the engine block and only the shell of the transmission). We have world leading technology to design high performance applied damping and sound barrier treatments.

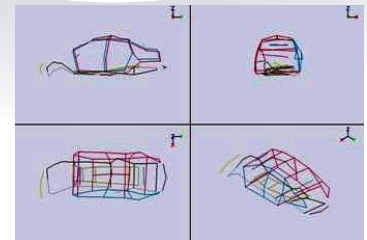
Roush has developed a technology to determine the stiffness of a structure using modal test data. This method is very cost effective because data from a single modal test is used to replace multiple structural tests (e.g., torsional, bending, breathing, and matchbox stiffness). The method is also used to measure local versus global stiffness.



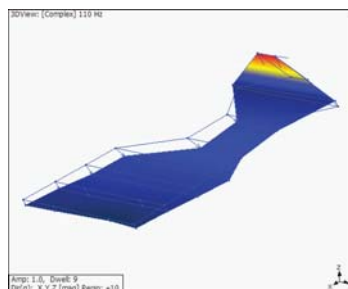
FEA modal analysis of a computer disk drive cover



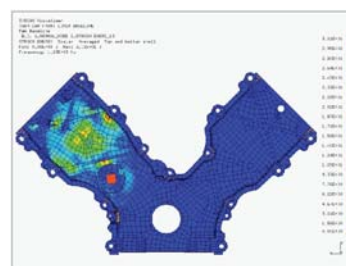
FEA modal analysis of an engine block



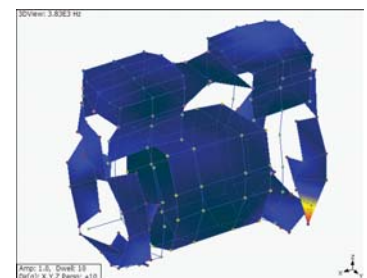
Modal measurement of a car body



Modal measurement of a hybrid powertrain, done In-vehicle



FEA modal analysis of an engine front cover



Modal analysis of an air pump